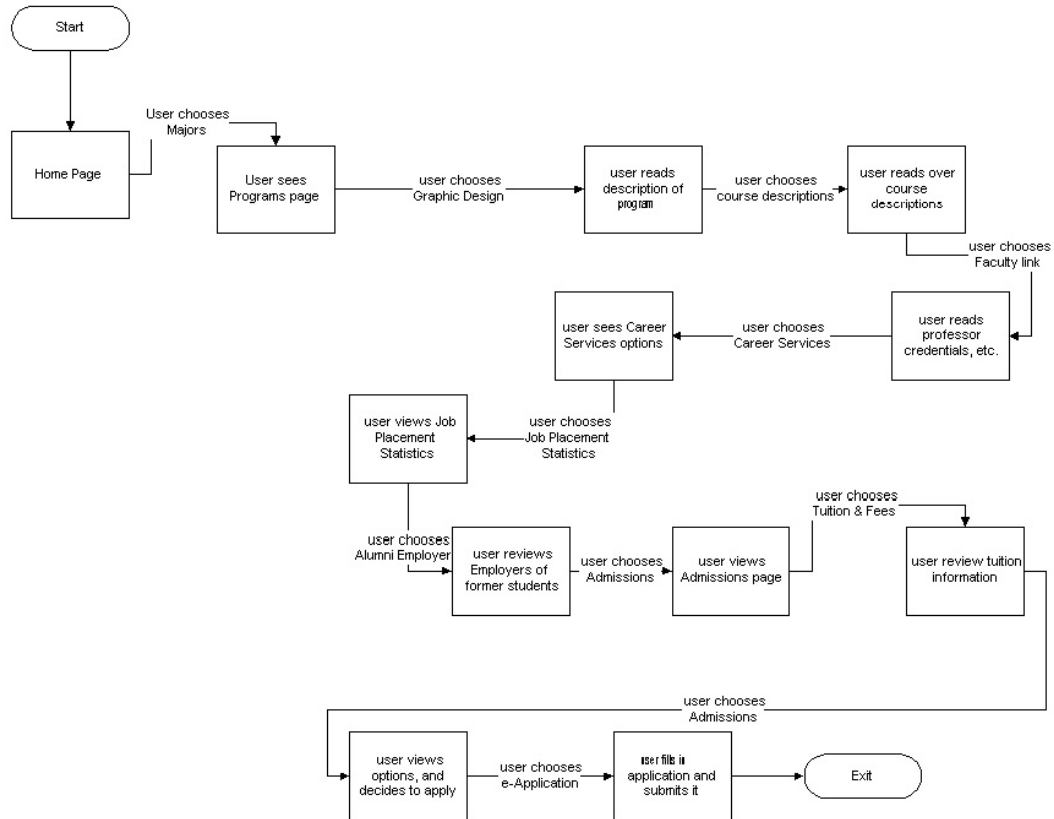


# User Scenarios

## Potential Students

A potential student enters the site to determine if they want to attend The Art Institute. They start on the home page, and select the “Majors” button. From there, they choose the program about which they want to learn. They choose “Graphic Design” from the local navigation. On the “Graphic Design” page, they read the program description, and choose to look at the “Course Descriptions”. They then choose to see the professors involved in this department. They are impressed by what they read, and they want to learn about job placement for students and how this program will help them get ahead. They choose the “Career Services” option from the global navigation. From there, they choose to look at the job placement information. Then they click on the local navigation for alumni information that includes companies where past students have been employed along with the positions they have/had. Again, they are impressed by the information, and want to learn about tuition. They click on the “Tuition” button, and read about the financial commitments involved, as well as the tuition assistance available. After gathering all of this information, the user decides to apply to The Art Institute. They click on the local navigation button, “Apply”, to apply online. Once they have applied, they exit the site.

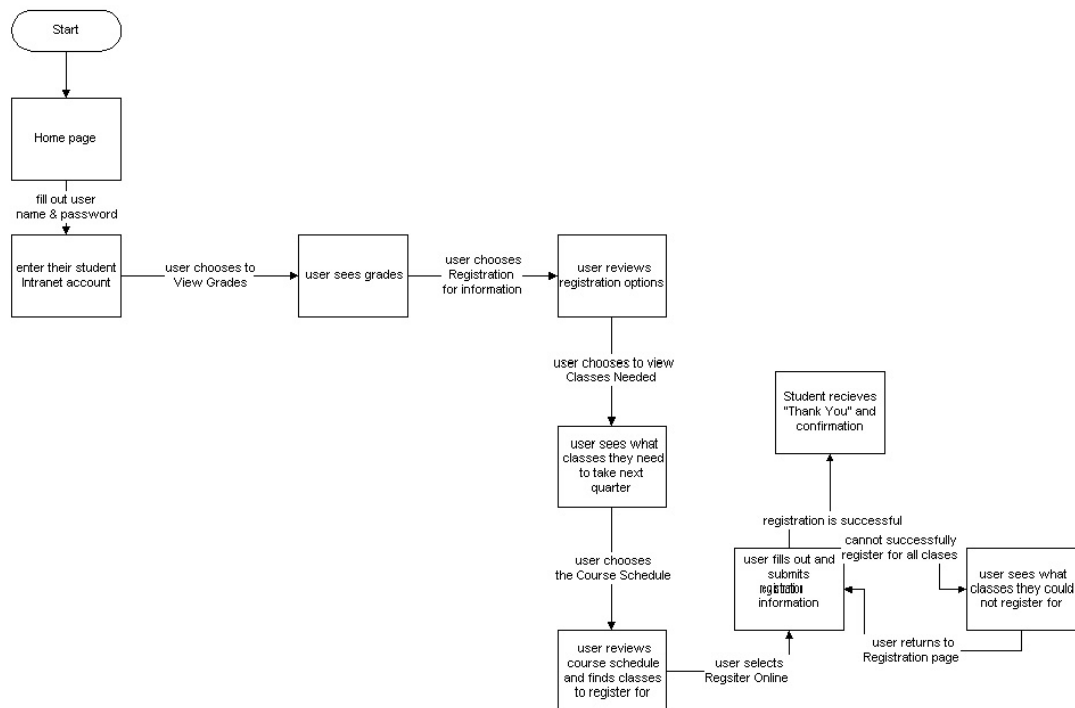
The Art Institute of Atlanta  
Process Flow: Potential Student



## Current Student

A current student comes to the site to check their grades from the last quarter and to register for the next quarter. They start on the home page. They select the “*Current Student*” option from the global navigation. From there, they enter their user ID (student number) and password. This takes them to a new section where they choose “*View grades.*” Upon reviewing their grades, they decide to register for the next quarter. They click on the “*Communications*” link to see any messages they have received from the school. Here, they see that they have received registration information, and choose to read this message. They see their class schedule for the next quarter, and select the “*Course Schedule*” option to view the dates and times the courses are offered. From here, they choose their classes. Then they go to the registration page and register for the appropriate classes. Once they “*Submit*” their chosen schedule, they either receive confirmation that they have successfully enrolled in these classes, or they are informed which classes are full or unavailable to them, and then they return to the “*Registration*” page.

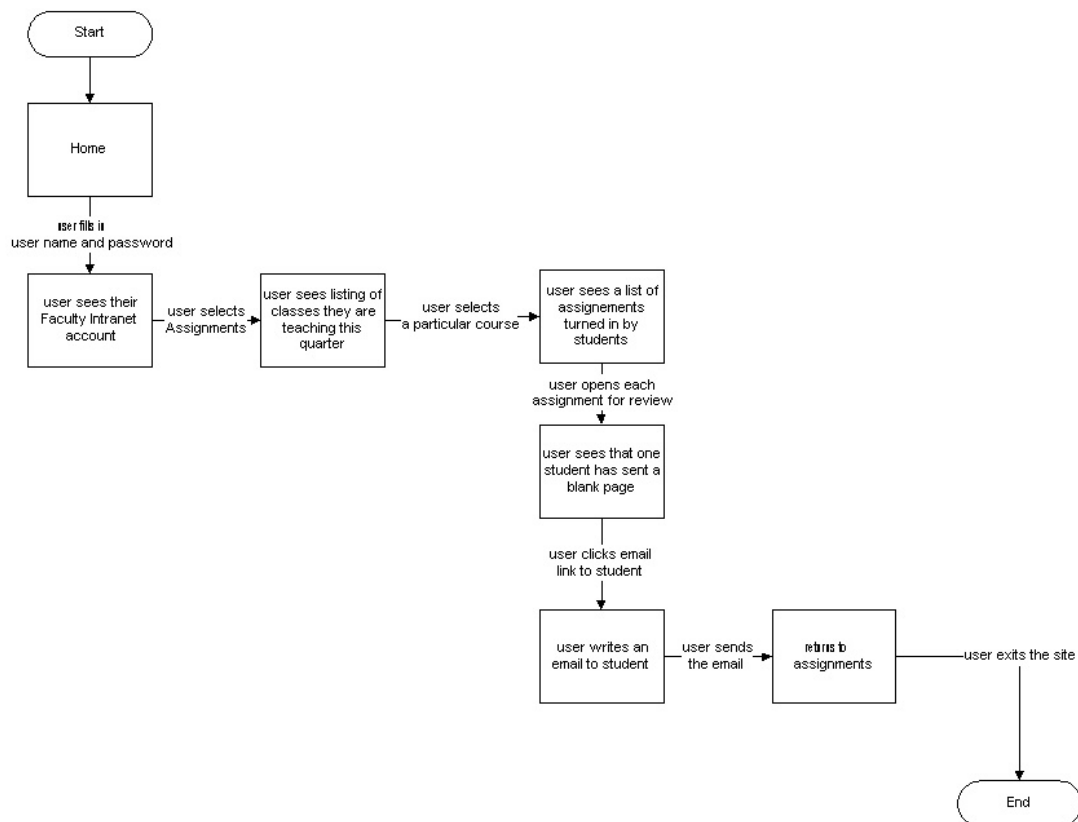
The Art Institute of Atlanta  
Process Flow: Current Student



## Faculty

A member of the faculty uses the site to receive assignments from students. From the home page, the user chooses to go to the password-protected section of the site. They then enter their name and password to view the next sub-navigation. From this page, they will choose the “*Faculty*” link. Here they have the option to check assignments on their “blackboard”. The teacher selects the proper class and reviews the completed assignments. He or she might see that one student’s submission is blank. At this point, the teacher clicks the student’s name to send an email to that student. Once the email is sent, the teacher logs off and exits the site.

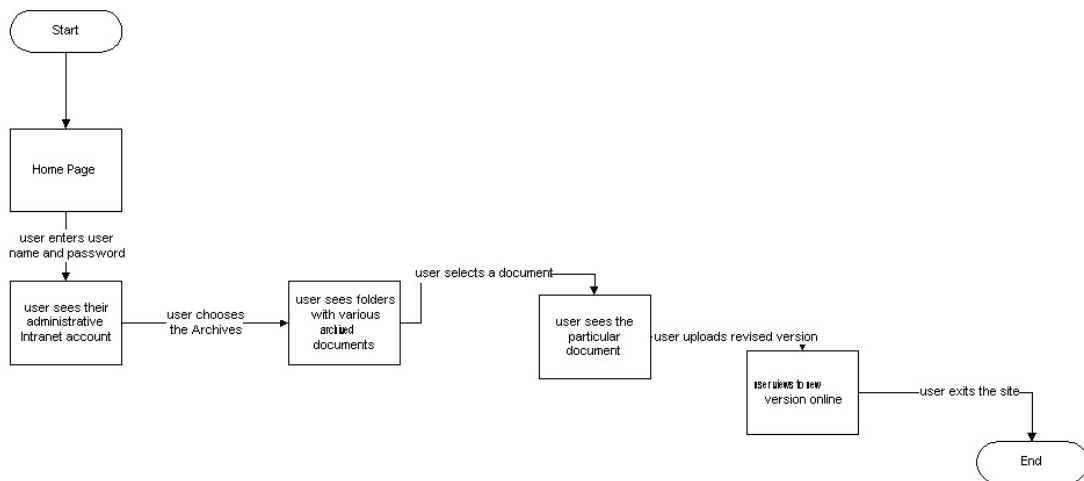
### The Art Institute of Atlanta Process Flow: Faculty



## Administrative staff

The administrative staff uses the site to store and update manuals, handbooks, and announcements to faculty and students. The administrator enters the home page and selects the Intranet section of the site. From here, they enter their name and password. Once they complete this information successfully, they choose to open the Administrative Staff section of the site. At this point, they choose to update a document in the “Archives”. They select the proper document and upload the revised document. From here, they log out and exit the site.

The Art Institute of Atlanta  
Process Flow: Administrative Staff



## Employers seeking Creative Professionals

An employer seeking to hire a Graphic Designer uses the site to look for potential employees. From the home page, the user goes to the “*Gallery*” to see the type of work being displayed. They choose “*Photographic Imaging*” from the local navigation. They choose an example to view, and click on the example to see an enlarged image, along with the student’s information (name and email address link). From there, the employer chooses to contact career services to post their open position. They click “*Career Services*” from the global navigation. From there, they choose the “*Contact Us*” option from the local navigation. From here, they exit the site.

### The Art Institute of Atlanta

Process Flow: Employers Seeking Creative Professionals

